

Challenge for Innovation

Toho Technology Group

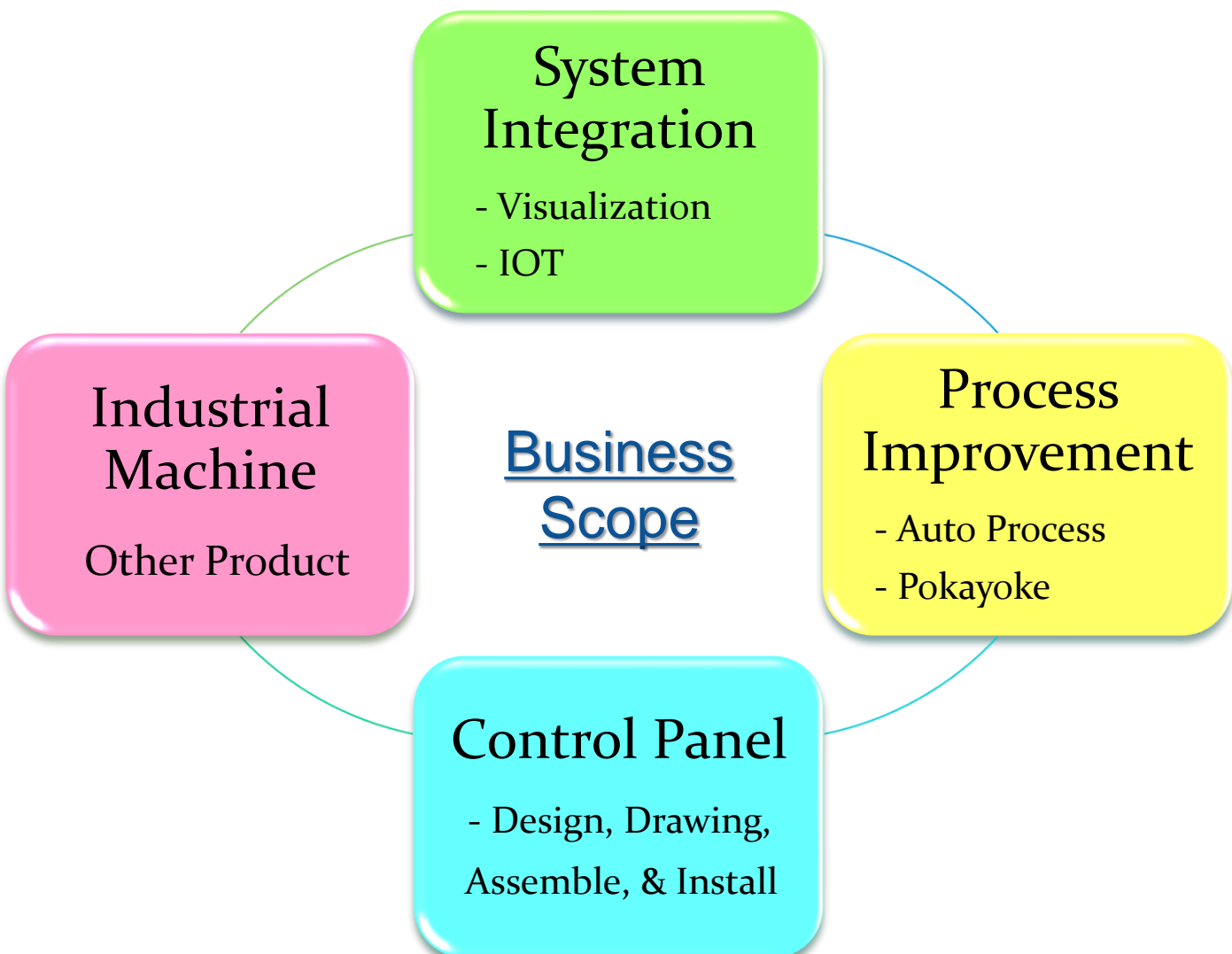
Company Profile



PT. TOHO TECHNOLOGY
INDONESIA

About us

Name	PT. TOHO TECHNOLOGY INDONESIA
Address - Jakarta Office	JL.Cipinang Cempedak II No.45 Jatinegara, Jakarta Timur
Address - Cikarang Office	Ruko Boulevard Frenso Blok C Kota Deltamas, Cikarang Pusat
Established	August 2012
Employee	Japanese x1 Local Staff x7
Capital	USD 300,000



Mile Stone

Toho Technology Corp.



- Family owned since 1819
- Main office at Nagoya, Japan
- 830 Employees (worldwide)
- Annual Revenue \$400M

Toho Global Network



Factory in Shanghai



R&D Sales Shanghai



Main Factory in Japan



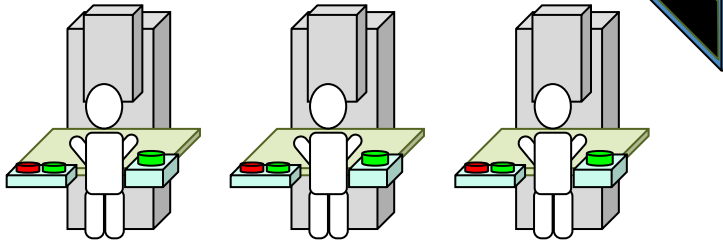
Japan Headquarters



Toho U.S.A. Chicago

System Integration

① Visualize: ANDON System



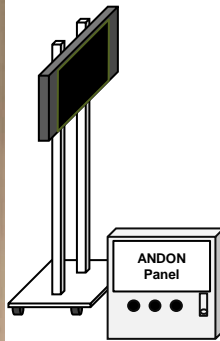
Real-Time Control by target count for each production model

Hourly Result	
Operation Time	Result (pcs)
Hour-1	13
Hour-2	18
Hour-3	16
Hour-4	11
Hour-5	0
Hour-6	0
Hour-7	0
Hour-8	0
Hour-OT1	0
Hour-OT2	0

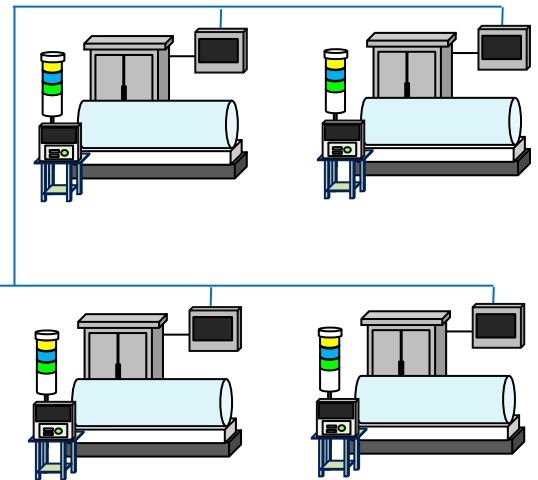
PLN	: 162
MST	: 20
RST	: 11
DIF	: -9
Total Stop-Time	
01:11:01	

LINE	LINE -1
PLAN	6
TARGET	6
ACTUAL	8
EFF (%)	133
Tact (sec)	1212

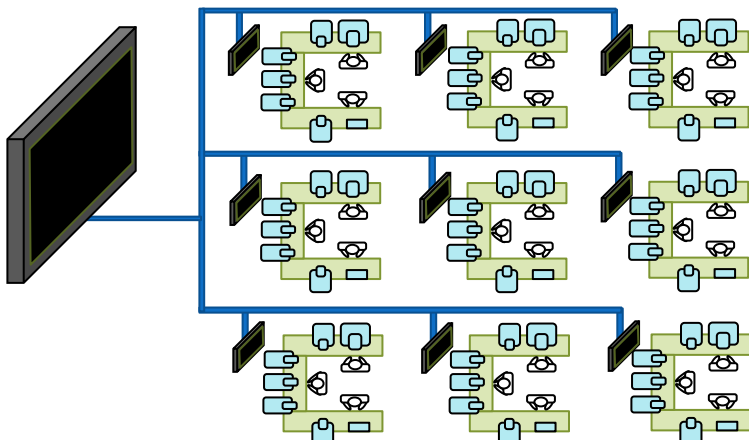
MC	Model	Machining Start/End	Changeover Start/End	Production Start/End	Preparation	EFF(%)
1	2841K10K23	01:23:20 / 00:41:40	00:33:20 / 00:16:40	00:25:00	41	
2	82241K5K40	01:40:00 / 00:03:31	00:05:27 / 00:04:36	00:04:00	85	
3	28110K3K24	01:08:40 / 00:12:57	00:16:18 / 00:03:33	00:11:06	60	
4	8211K09K54	01:15:00 / 00:05:45	00:03:54 / 00:00:00	00:16:20	74	



Real-Time Monitoring by direct Data Logging from each machine



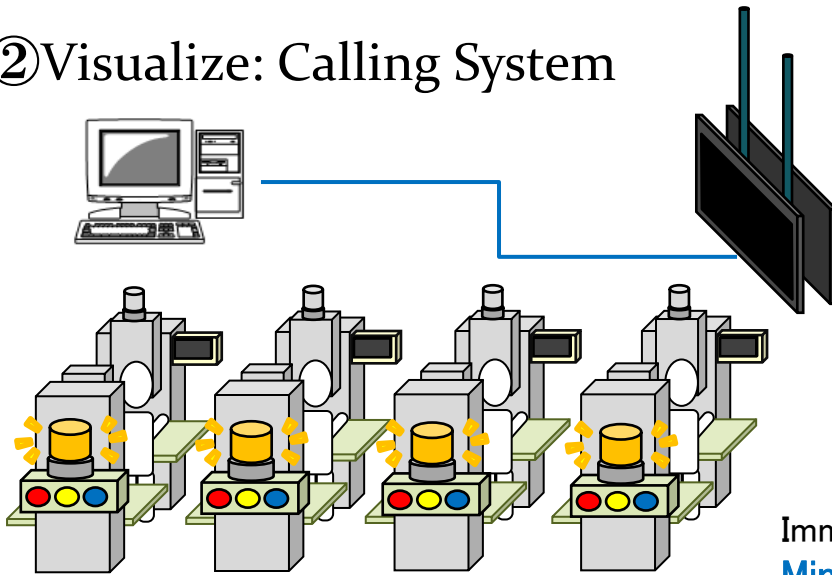
* Centralize Monitor @ Office, TE, etc



LINE	MODEL	PLAN	ACTUAL	EFF(%)
1	K25	920	922	100
2	K40 IND	915	912	99
3	STOP	0	0	0
4	K40 IND	908	901	99
5	2PV-25	976	1031	105
6	STOP	0	0	0
7	2PH	973	1032	106
8	25G	561	552	98

System Integration

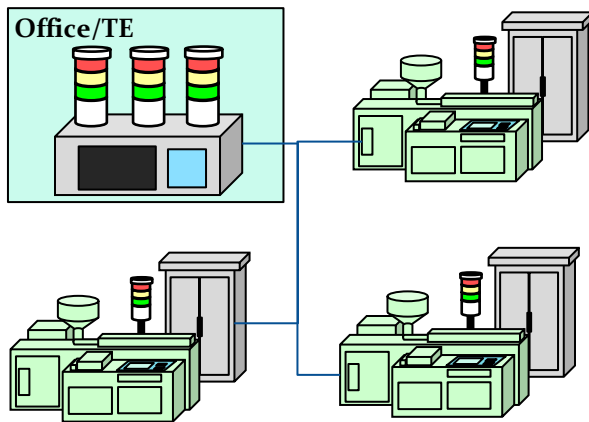
② Visualize: Calling System



A-1	A-2	A-3	A-4
B-1	B-2	C-1	D-1
D-2	E-1	E-2	F-1
F-2	F-3	G-1	G-2

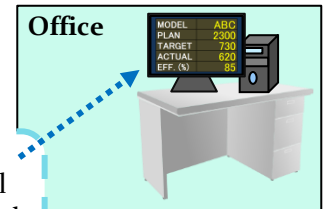
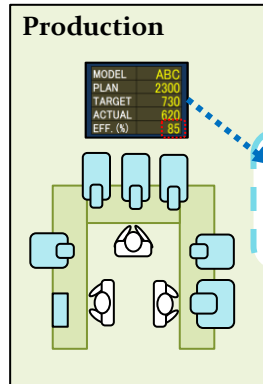
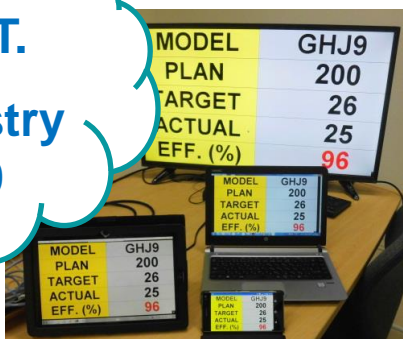
* Monitor Ver.

Immediate Alarm to PIC / Superior
Minimize & Control DOWN TIME

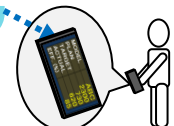


* Signal Tower Ver.

I.O.T.
Industry
4.0



Local Network

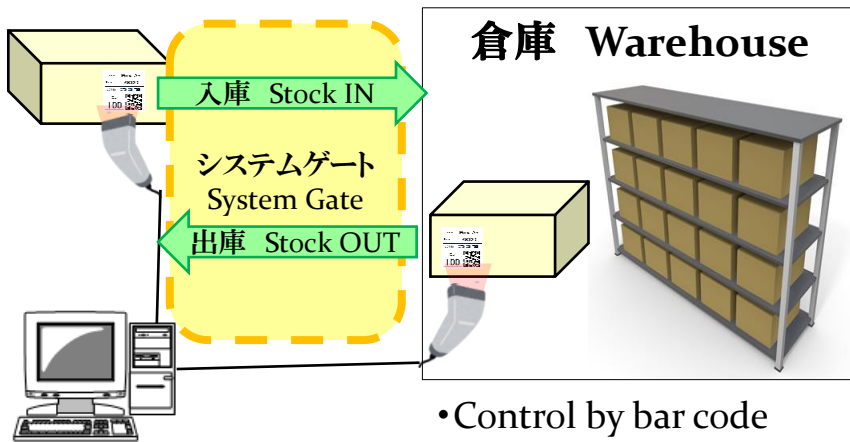


* Remote Control by various device

System Integration

③ Visualize: Parts / Products Qty Control

Stock Control System



Lot No	品名	Lot	倉庫区分	入庫日	在庫数	仕庫数	出庫日	出入庫 Zoho区分	出入庫数
AB01	abc-123	ABC	0001	2016/10/10	85	85	2016/10/23	AB01	0
AB01	abc-123	ABC	0002	2016/10/12	130				
AB01	abc-123	ABC	0004	2016/10/17	40				
AB01	abc-123	ABC	0005	2016/10/18	100				
AB01	abc-123	ABC	0006	2016/10/20	30				
AB01	abc-123	ABC	0007	2016/10/21	230				
AB01	abc-123	ABC	0008	2016/10/25	360				
AB01	abc-123	ABC	0009	2016/10/26	120				
AB01	abc-123	ABC	0010	2016/10/27	120				

- Control by bar code
- Accurate Qty control by auto-recording
- Minimize stock IN/OUT working period

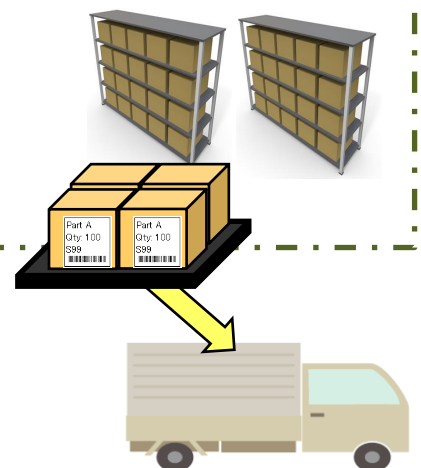


ANDON: Delivery Condition

Office:

Lot No	Delivery Time		Quantity			Status
	Plan	Actual	Total	Delivered	Remain	
HPM 02201912002701	08:00	10:27	840	840	0	Closed
HPM 02201912002801	10:00	10:27	840	840	0	Closed
HPM 06201912000501	13:00	12:50	2520	2520	0	Closed
HPM 06201912000601	15:00	14:43	2520	2520	0	Closed
HPM 02201912004301	16:00		180	0	180	Open
HPM 06201912000701	17:00	16:28	2520	2520	0	Closed
HPM 02201912004401	19:00		180	0	180	Open
HPM 06201912000801	20:00	11:56	2580	120	2460	Open

W/H:



Real-Time Control of Delivery

- **Delay Delivery**
- **Insufficient Qty**
- **Wrong Item Delivery**

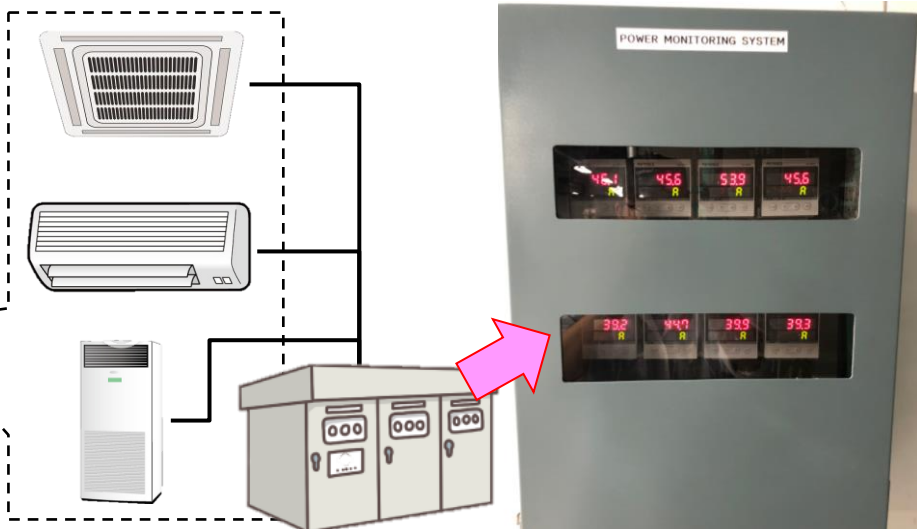
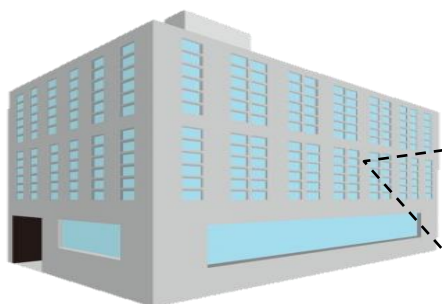
Preventively STOP above defects

System Integration

④ Visualize: Energy Consumption

Elec. Consumption

* Eg: Air-conditioning

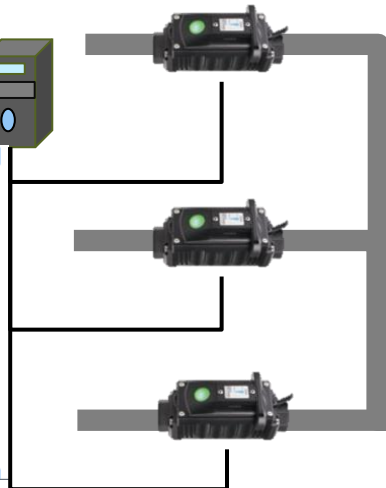
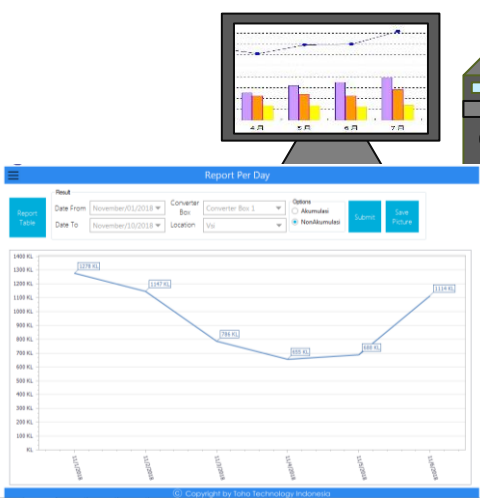
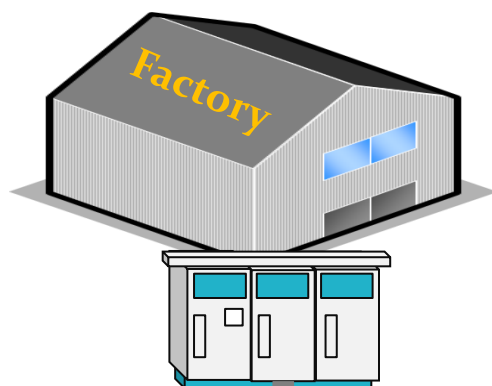


OMRON

KEYENCE

Air-Flow Volum

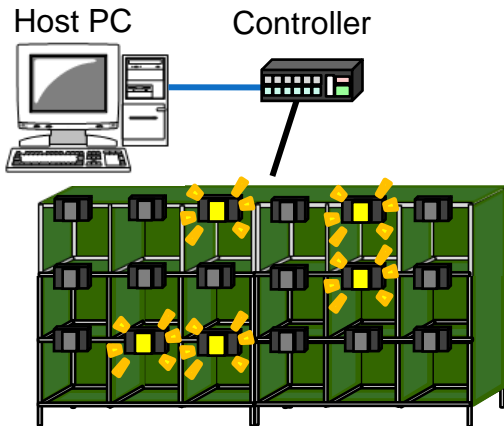
* Eg: Compressor



Process Improvement

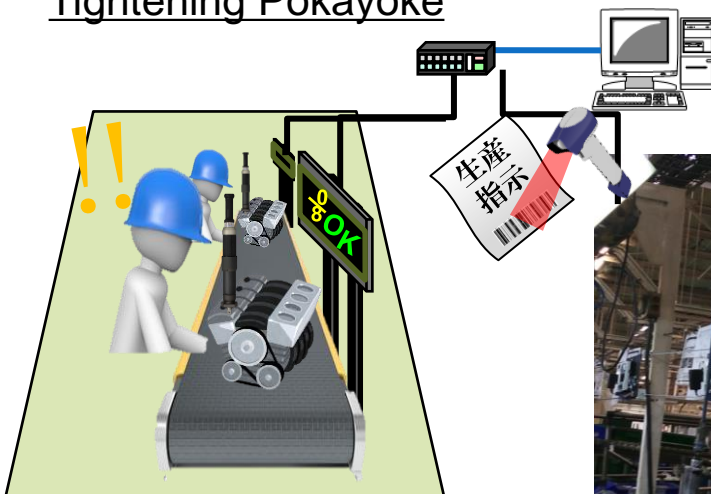
① Pokayoke / Process Improvement

Picking System



J.I.T. Parts Supply to prod:
Right parts, Right Qty, Right place

Tightening Pokayoke



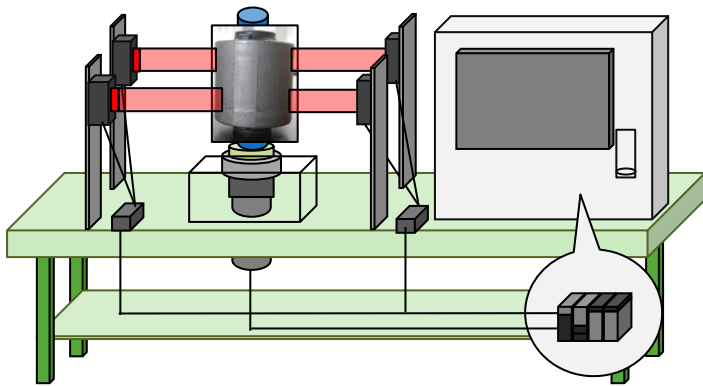
Complete All Process Steps
Checking Torque Spec at
the same time
Inter-Lock function include



Process Improvement

② Auto/Semi-auto Process

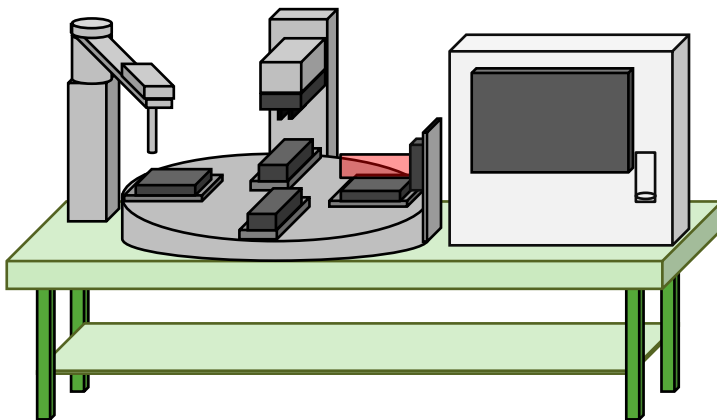
Auto Inspection Machine



Inspect Outer Diameter by Sensor
OK/NG value, Check frequency set by PLC
Data Logging available by connect to PC



Semi-auto Material Cutting Machine



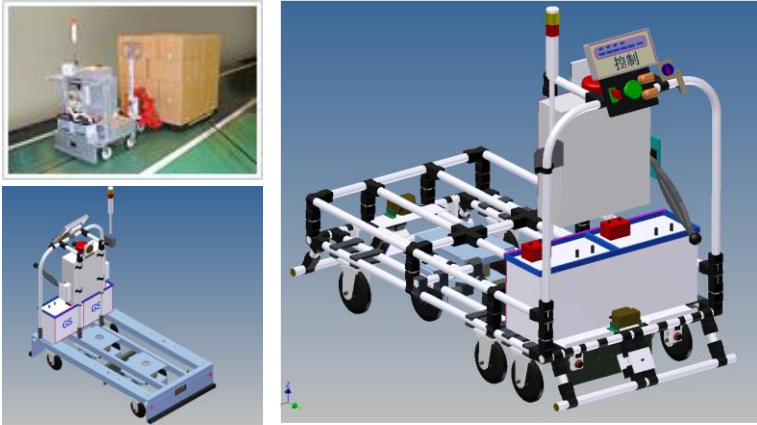
Auto-cutting material by each specification
Specification setting by PLC
Data Logging available by connect to PC



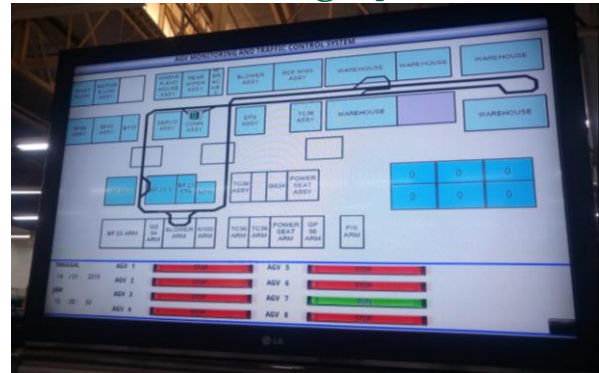
Concept⇒Design⇒Prod available

Process Improvement

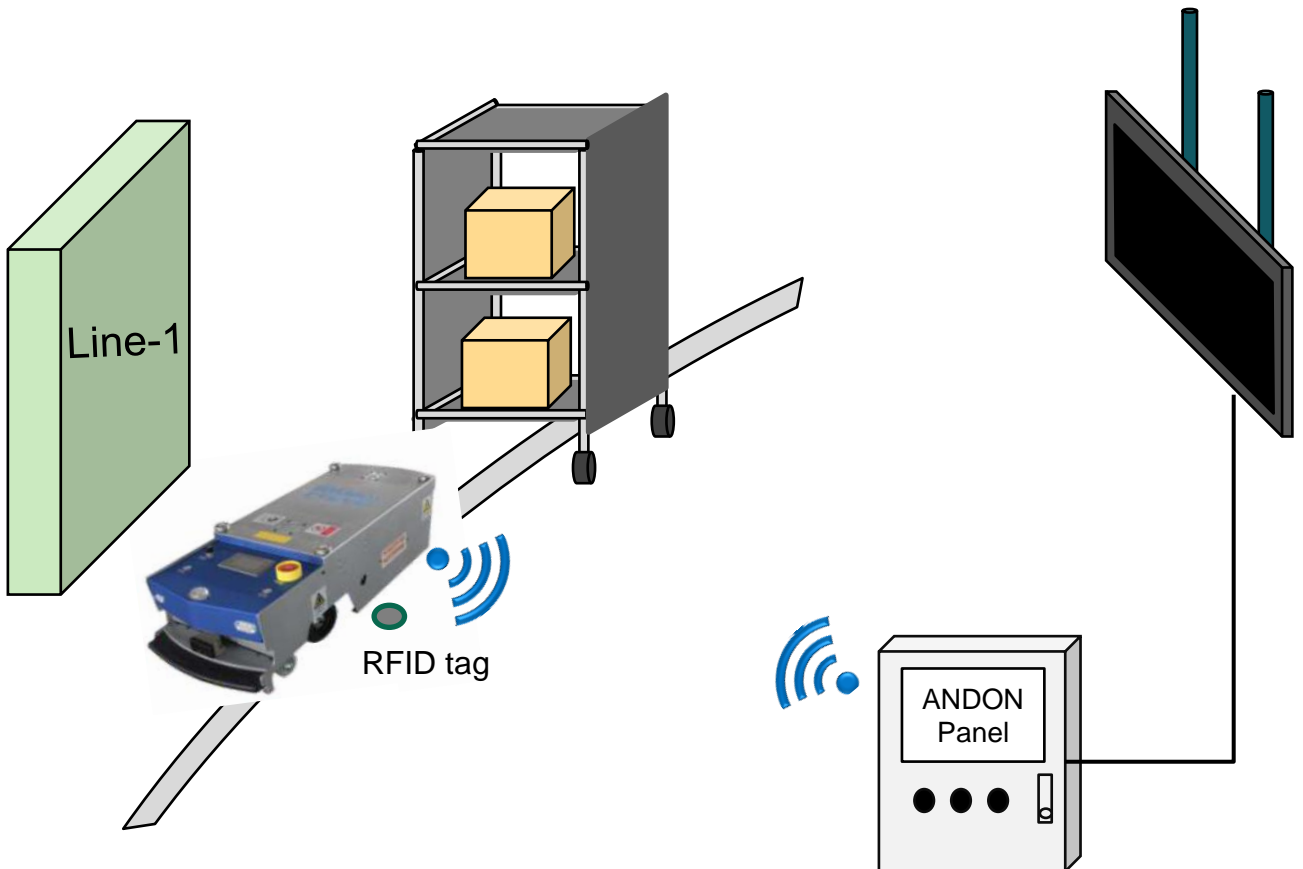
③ AGV+Tracking System



Vehicle Tracking & Monitoring System

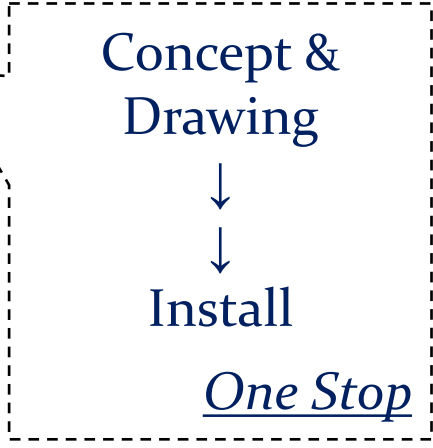
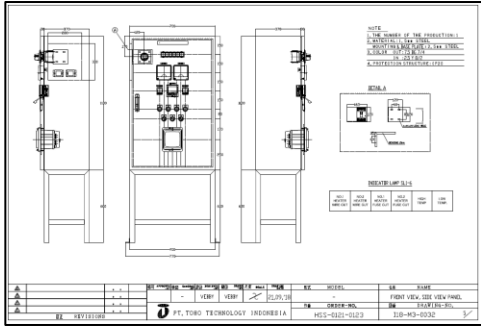


Effective Transportation for Prod / Parts
Reduce Man Power / Labor Cost



Control Panel

Control Panel



Re-Engineering

* Eg: Old (Discontinue) → Current

* Eg: Replace by diff. maker

A series

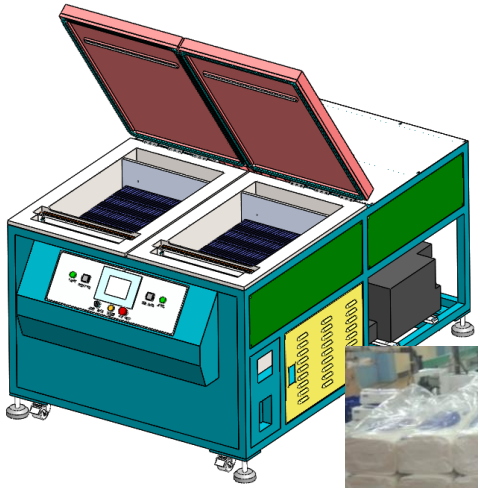
Q series



etc...

Industrial Machine / Parts

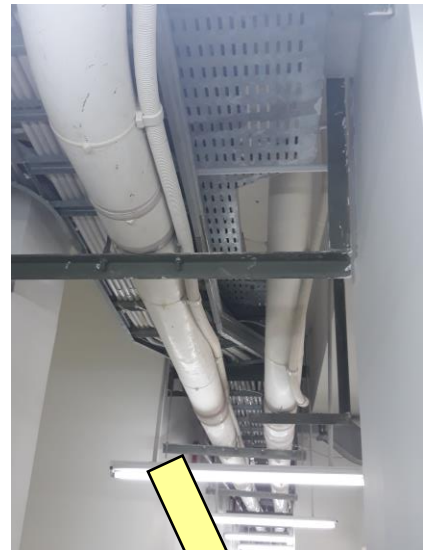
① Vacuum Sealer Press Machine



 **Toho Technology Co**

② Shooter System

 **NIPPON SHOOTER LTD.**
株式会社 日本シューター



*** To Destination**

 **PT. TOHO TECHNOLOGY INDONESIA**

Industrial Machine / Parts

③ Ink Jet Printer



HITACHI
Inspire the Next

株式会社 日立産機システム

Despite of its sales,
we can make unit
sales with other
machines.

④ Carton Box Sealer Machine

SIAT
MAILLIS



Concept→Installation available

Other Product

FA Products



OMRON

KEYENCE

FE 富士電機

IDEC

PATLITE

Pro-face

HITACHI
Inspire the Next

YSHIDA

* Import and Supply Japanese maker products

etc...

Secondary Materials



OPP TAPE



STRETCH FILM



HANDY WRAP



EDGE PROTECTOR



DUNNAGE BAG



SLIP SHEET



TYING TWINE



SILICA GEL



SHRINK FILM



AIR BUBBLE PACK



A/S SHIELDING BAG



MASKING TAPE



PP STRAPPING BAND



PET STRAPPING BAND



DOUBLE SIDE TAPE



KRAFT TAPE



ALUMINIUM TAPE

Other Product



etc...



Our Client:

- PT. ASMO INDONESIA
- PT. ASTRA HONDA MOTOR
- PT. DENSO INDONESIA
- PT. HINO MOTOR MANUFACTURING INDONESIA
- PT. HONDA PROSPECT MOTOR
- PT. HOYU INDONESIA
- PT. ICHIKOH INDONESIA
- PT. KEIHIN INDONESIA
- PT. KITO INDONESIA
- PT. MIZUSHIMA METALWORKS INDONESIA
- PT. MORIROKU TECHNOLOGY INDONESIA
- PT. NHK SPRING INDONESIA
- PT. PANASONIC ENERGY GOBEL INDONESIA
- PT. SEIWA INDONESIA
- PT. SEKISUI POLYMATECH INDONESIA
- PT. SOMIC INDONESIA
- PT. SUBANG AUTOCOMP INDONESIA
- PT. SUZUKI INDOMOBIL MOTOR
- PT. TOKAI RUBBER INDONESIA
- PT. TOYOTA MOTOR MANUFACTURING INDONESIA

etc...



PT. TOHO TECHNOLOGY INDONESIA

Web: <https://www.tohotec-id.com/>



Mail: info@tohotec-id.com

> Jakarta Office

Jl. Cipinang Cempedak II No.45
Jatinegara, Jakarta Timur

Tel: 021 2936 0907



> Cikarang Office

Ruko Boulevard Frenso Blok C
Kota Deltamas, Cikarang Pusat

Tel: 021 2215 7995

